



CANDELARIA NATURE PRESERVE WETLANDS

ALBUQUERQUE, NEW MEXICO - SEPTEMBER 2020

TABLE OF CONTENTS

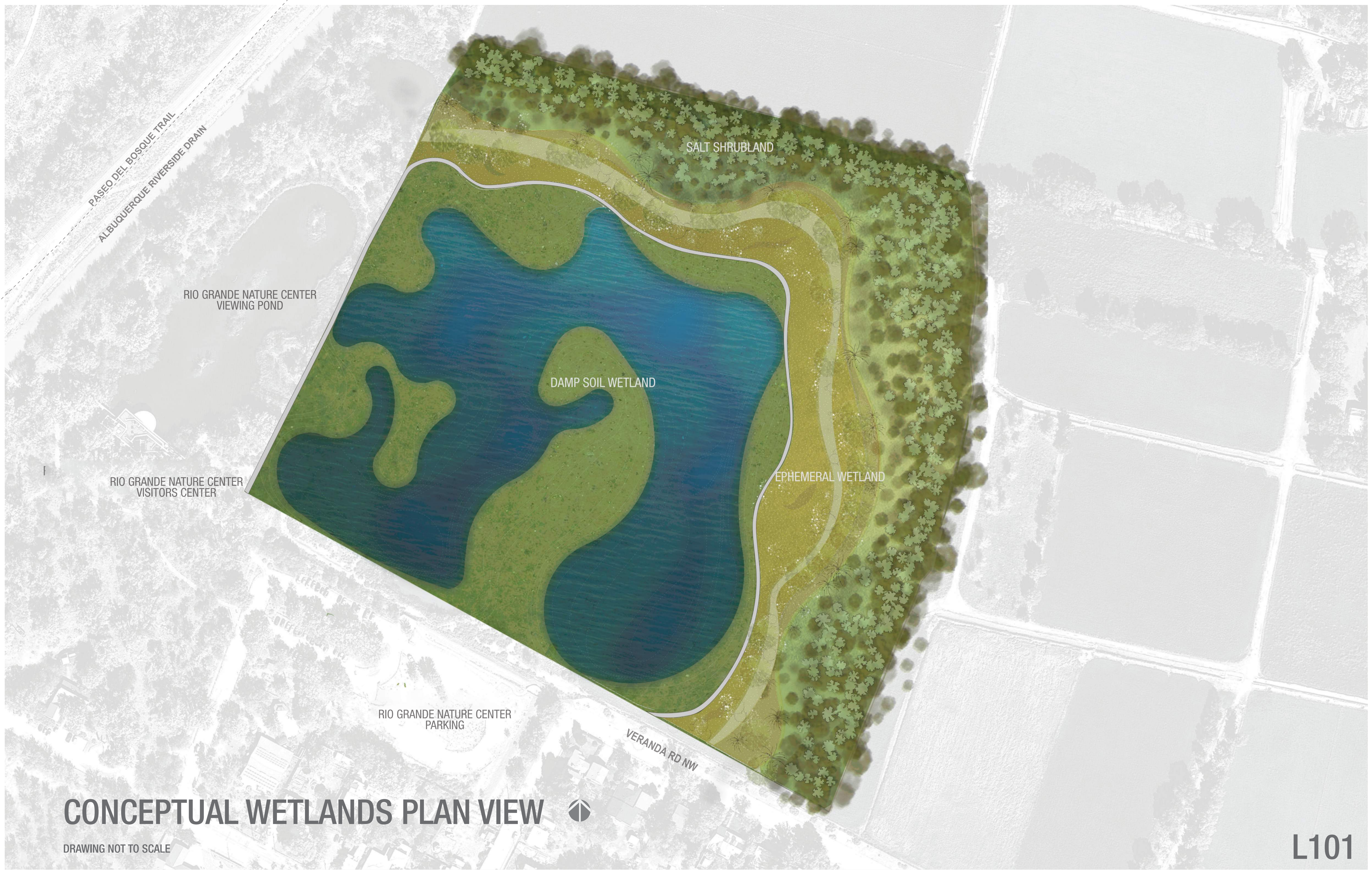
SHEET L101 - CONCEPTUAL WETLANDS PLAN VIEW
SHEET L102 - CONCEPTUAL DAMP SOIL WETLAND DESIGN
SHEET L103 - CONCEPTUAL DAMP SOIL PLANT LIST

SHEET L104 - CONCEPTUAL EPHEMERAL WETLAND DESIGN
SHEET L105 - CONCEPTUAL EPHEMERAL WETLAND PLANT LIST
SHEET L106 - HYDROLOGIC CONNECTION TO THE RIO GRANDE RIVER



Aquatic Consultants
The Lake & Stream Experts





CONCEPTUAL WETLANDS PLAN VIEW







DRAWING NOT TO SCALE



DAMP SOIL WETLAND



DAMP SOIL WETLAND ZONES

	ZONE 1	0" TO +12"	6.8 ACRES (40%)
	ZONE 2	0" TO 6" DEPTH	6.8 ACRES (40%)
	ZONE 3	6"-24" DEPTH	2.5 ACRES (15%)
	ZONE 4	24"-84" DEPTH	0.9 ACRES (5%)

DAMP SOIL WETLAND 17 ACRES TOTAL




 ACCESS ROAD



EPHEMERAL WETLAND



EPHEMERAL WETLAND ZONES

	ZONE 1	0" TO +6"	1.1 ACRES (20%)
	ZONE 2	0"	3.1 ACRES (60%)
	ZONE 3	0" TO 12" DEPTH	1.1 ACRES (20%)

EPHEMERAL WETLAND 5.3 ACRES TOTAL

 ACCESS ROAD

CONCEPTUAL EPHEMERAL WETLAND DESIGN 

DRAWING NOT TO SCALE



PLANTING PALETTE



DAMP SOIL WETLAND PLANT LIST

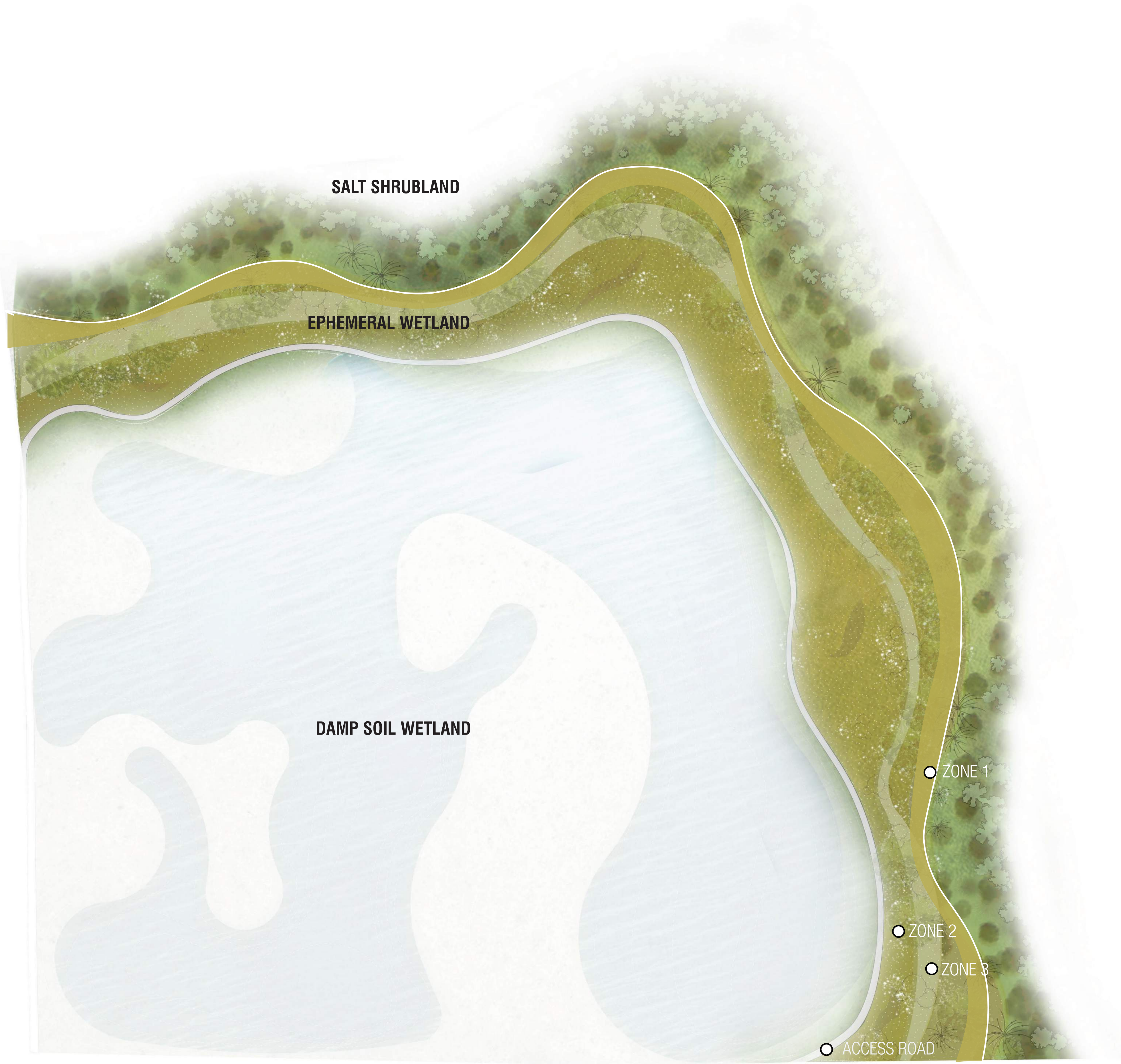
- Zone 1**
- Showy milkweed
 - Western goldentop
 - Pecos sunflower
 - Illinois Bundleflower
 - Yarba mansa
 - Wild mint
 - Bottlebrush sedge
 - Clustered field sedge
 - Nebraska sedge
 - Common spikerush
 - Riparian primrose
 - Nuttals sunflower
 - Baltic rush
 - Emory's sedge
 - Woolly sedge
- Asclepias speiosa
 - Euthamia occidentails
 - Helianthus paradoxus
 - Desmanthus illinoensis
 - Anemopsis californica
 - Mentha arvensis
 - Carex hystericina
 - Carex praegracilis
 - Carex nebrascensis
 - Eleocharis parishii
 - Oenothera elata
 - Helianthus nuttaliana
 - Juncus balticus
 - Carex emoryi
 - Carex pellita

- Zone 2**
- Vine-mesquite
 - Cosmopolitan bulrush
 - Marshy spike-rush
 - Toad rush
 - Dudley's rush
 - Torrey's rush
 - Common spikerush
 - Nuttals sunflower
 - Baltic rush
 - Fowl Manna grass
 - Tufted hairgrass
- Panicum obtusum
 - Bolboschoenus maritimus
 - Eleocharis palustris
 - Juncus bufonius
 - Juncus dudleyi
 - Juncus torreyi
 - Eleocharis parishii
 - Helianthus nuttaliana
 - Juncus balticus
 - Glyceria striata
 - Deschampsia ceaspitosa

- Zone 3**
- Cosmopolitan bulrush
 - Torrey's rush
 - Chairmakers bulrush
 - Threesquare bulrush
 - Softstem bulrush
 - Tufted hairgrass
 - Sago pondweed
- Bolboschoenus maritimus
 - Juncus torreyi
 - Schoenoplectus americanus
 - Schoenoplectus pungens
 - Schoenoplectus tabernaemontanii
 - Deschampsia ceaspitosa
 - Potamogeton pectinate

DAMP SOIL WETLAND - PLANT LIST

DRAWING NOT TO SCALE



PLANTING PALETTE



EPHEMERAL WETLAND PLANT LIST

- Zone 1**
- Marsh sunflower
 - Rocky Mountain Beeplant
 - Horsetail Milkweed
 - Showy milkweed
 - Western goldentop
 - Seaside heliotrope
 - Yerba mansa
 - Inland saltgrass
 - Giant sacaton
 - Vine mesquite
 - Scratchgrass
 - Western wheatgrass
 - Galleta
 - Indian grass
 - Alkali sacaton
 - Clustered field sedge
 - Nebraska sedge
 - Riparian primrose
 - False indigo bush
 - Three leaf sumac
 - Golden current
- Helianthus nuttaliana
 - Cleome serrulata
 - Asclepias subverticillata
 - Asclepias speciosa
 - Euthamia occidentalis
 - Helianthus ciliaris
 - Anemopsis californica
 - Distichlis spicata
 - Sporobolus wrightii
 - Panicum obtusum
 - Mullenbergia asperifolia
 - Pascopyrum smithii
 - Pleuraphis jamesii
 - Sorghastrum nutans
 - Sporobolus airpoides
 - Carex praegracilis
 - Carex nebraskensis
 - Oenothera elata
 - Amorpha fruticosa
 - Rhus trilobata
 - Ribes aureum

- Zone 2**
- Horsetail milkweed
 - Showy milkweeds
 - Seaside heliotrope
 - Inland saltgrass
 - Vine-mesquite
 - Alkali sacaton
 - Clustered field sedge
 - Nebraska sedge
 - Riparian primrose
 - Desert spikerush
 - Tufted hairgrass
 - Swamp milkweed
 - Baltic rush
 - Threesquare bulrush
 - Common spikerush
 - Bottlebrush sedge
 - Desert willow
 - Gooddings willow
 - Box elder
- Asclepias subverticillata
 - Asclepias speciosa
 - Helianthus ciliaris
 - Distichlis spicata
 - Panicum obtusum
 - Sporobolus airpoides
 - Carex praegracilis
 - Carex nebraskensis
 - Oenothera elata
 - Eleocharis parishii
 - Deschampsia ceaspitosa
 - Asclepia incarnata
 - Juncus balticus
 - Schoenoplectus pungens
 - Eleocharis parishii
 - Carex hystericina
 - Chilopsis linearis
 - Salix gooddingii
 - Acer negundo

- Zone 3**
- Desert spikerush
 - Tufted hairgrass
 - Baltic rush
 - Threesquare bulrush
 - Common spikerush
 - Bottlebrush sedge
- Eleocharis parishii
 - Deschampsia ceaspitosa
 - Juncus balticus
 - Schoenopletus pungens
 - Eleocharis parishii
 - Carex hystericina

EPHEMERAL WETLAND - PLANT LIST

DRAWING NOT TO SCALE

RETURN FLOW TO RIO GRANDE RIVER

PASEO DEL BOSQUE TRAIL
ALBUQUERQUE RIVERSIDE DRAIN

RIO GRANDE NATURE CENTER VIEWING POND

RIO GRANDE NATURE CENTER VISITORS CENTER

SALT SHRUBLAND

DAMP SOIL WETLAND

EPHEMERAL WETLAND

RIO GRANDE NATURE CENTER PARKING

VERANDA RD NW

IRRIGATION WATER FROM THE RIO GRANDE RIVER VIA THE DURAN DITCH

HYDROLOGIC CONNECTION TO THE RIO GRANDE RIVER

DRAWING NOT TO SCALE

